



Civil GPS Service Interface Committee

Surveying, Mapping, and Geosciences Subcommittee Report

Chair: Ms. Francine Coloma, NOAA National Geodetic Survey

Deputy Chair: Mr. Neil Winn, National Park Service

22 September 2020



Current Status and the Future of the NOAA CORS Network

John Galetzka

Chief, Continuously Operating Reference Stations Branch

NOAA National Geodetic Survey

Web site: <https://www.ngs.noaa.gov/CORS/>

Email: ngs.cors@noaa.gov



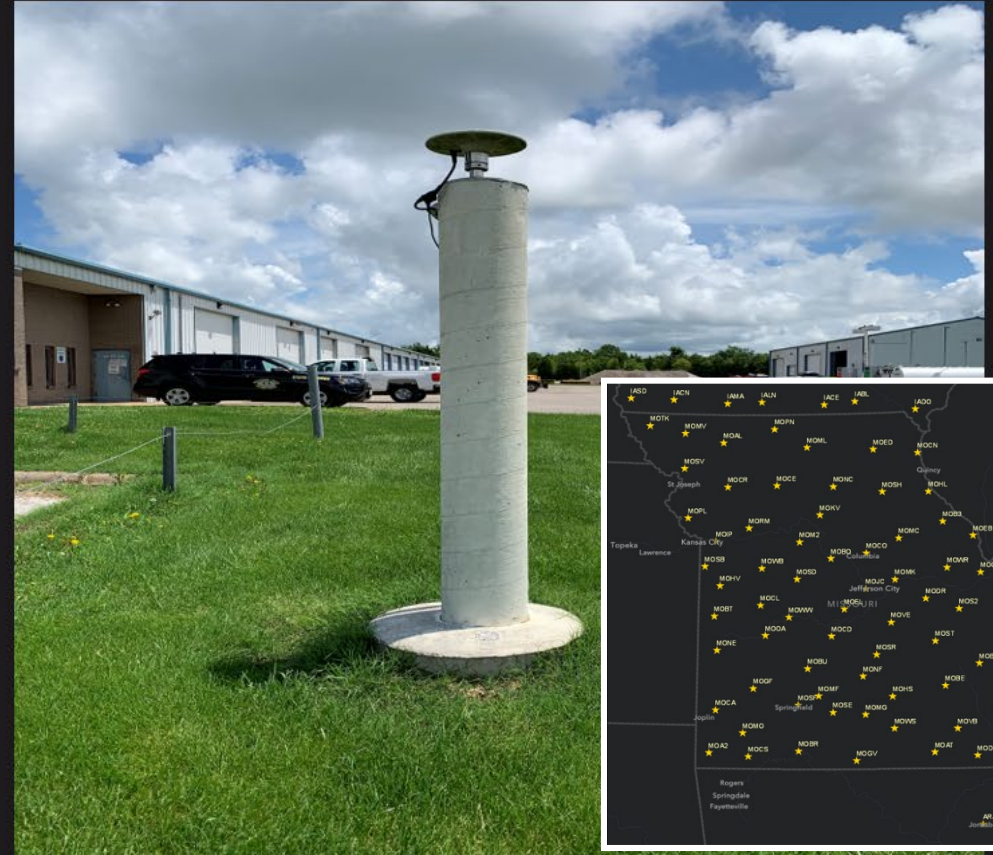
*Jim Copeland
Land Survey Coordinator*



*Tony Morgan
GIS Specialist*



*George Kipp
GIS Specialist*



MoDOT Real-Time Kinematic Network



MISSOURI DEPARTMENT OF AGRICULTURE

LAND SURVEY PROGRAM

By: Jess Moss PLS

Agriculture.Mo.Gov

Map No. 4.



Full Citation: Map RG49-OMF-US40-4; Map of the Louisiana Purchase Territory; 1903; United States; Old Map File Manuscript and Annotated Maps of the United States and Its Territories, 1812 - 1946; Records of the Bureau of Land Management, Record Group 49; National Archives at College Park, College Park, MD. [Online Version, <https://www.docsteach.org/documents/document/map-louisiana-purchase>, August 21, 2020]



Forest Service National Remote Sensing Program

Civil GPS Service Interface Committee (CGSIC)
Fall 2020 Meeting
September 21, 2020

Everett A. Hinkley

National Remote Sensing Program Manager
USDA Forest Service



Supporting GNSS Workflow and Staff Skill Diversity in the NPS Midwest Region

Reese Hirth
GIS Coordinator
National Park Service
DOI Regions 3,4, & 5 (formerly Midwest Region)

CGSIC / ION GNSS+
2020
September 21-22, 2020

EXPERIENCE YOUR AMERICA



Exploiting SWPC Products to Aid Positioning and Accuracy

60th CGSIC Meeting, 20-21 Sep 2020

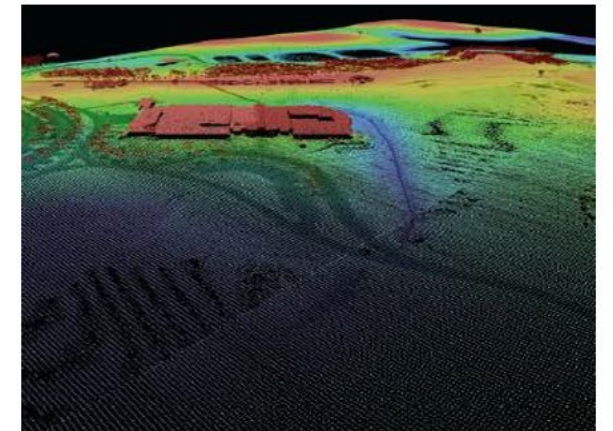
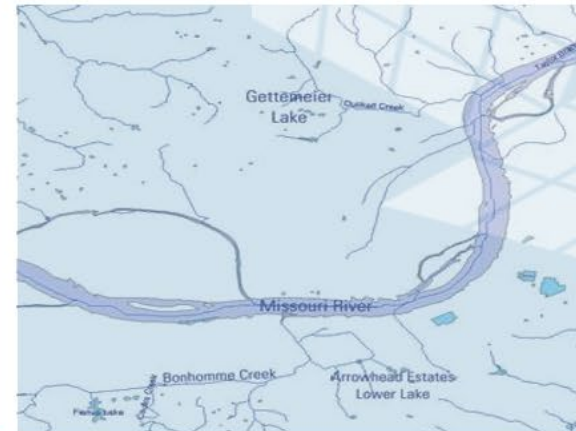
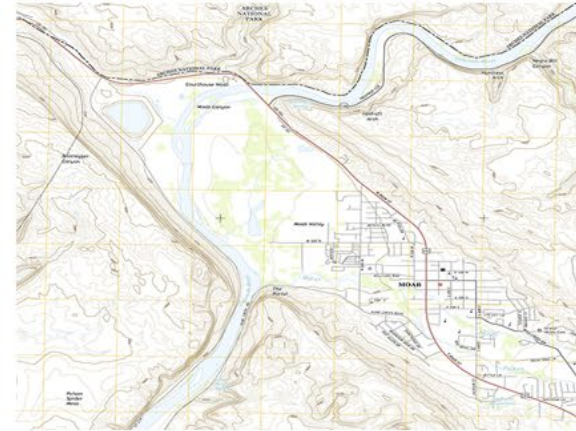
Rob Steenburgh
Space Weather Prediction Center
Boulder, CO
robert.steenburgh@noaa.gov



<https://www.swpc.noaa.gov/communities/global-positioning-system-gps-community-dashboard>



GPS/GNSS applications in support of the USGS 3D Elevation Program (3DEP)



Josh Nimetz

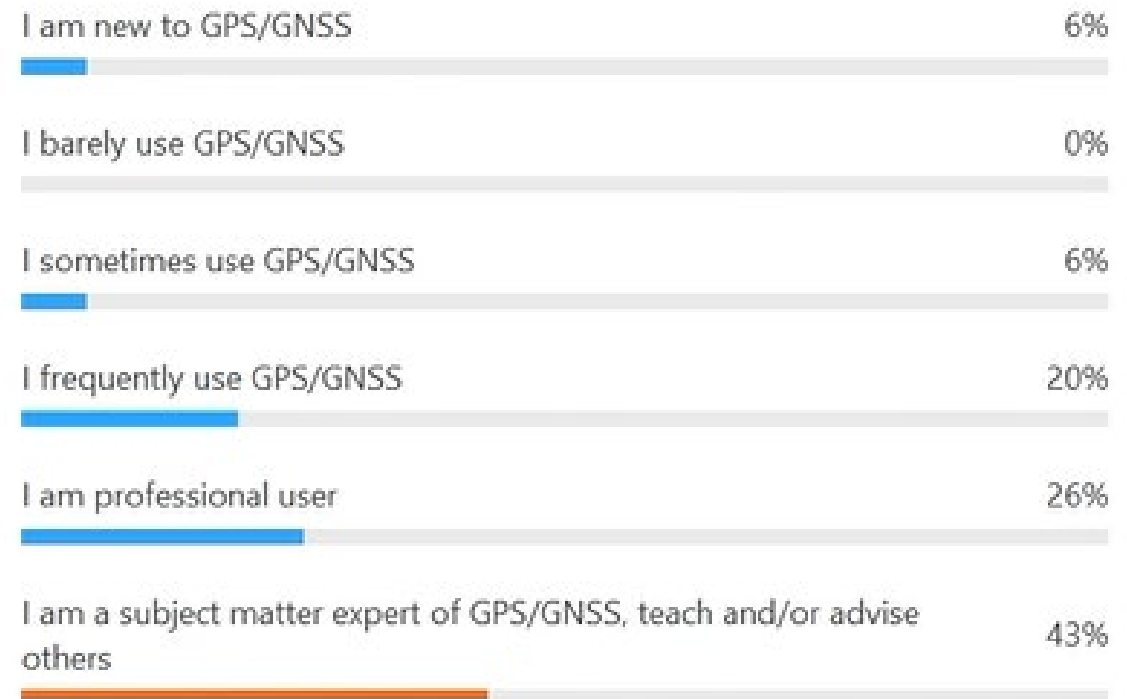
GPS/GNSS applications in support of the USGS 3D Elevation Program (3DEP)

60th Meeting of the Civil GPS Service Interface Committee
September 22, 2020

Windows title bar: Polls

Host is sharing poll results

1. What is your level of expertise with GPS/GNSS?



Windows title bar: Polls

Host is sharing poll results

1. NGS has delayed the release of the Modernized NSRS, which had been planned for 2022. How does this delay affect you?



Host is sharing poll results

1. Should the GPS L2C signal be considered operational?

