



59th Meeting of the Civil GPS Service Interface Committee



SURVEYING, MAPPING, AND GEOSCIENCES SUBCOMMITTEE

ACTING CHAIR: MS. FRANCINE COLOMA, NOAA NATIONAL GEODETIC SURVEY
DEPUTY CHAIR: MR. NEIL WINN, U.S. NATIONAL PARK SERVICE

Current Status and the Future of the CORS Network

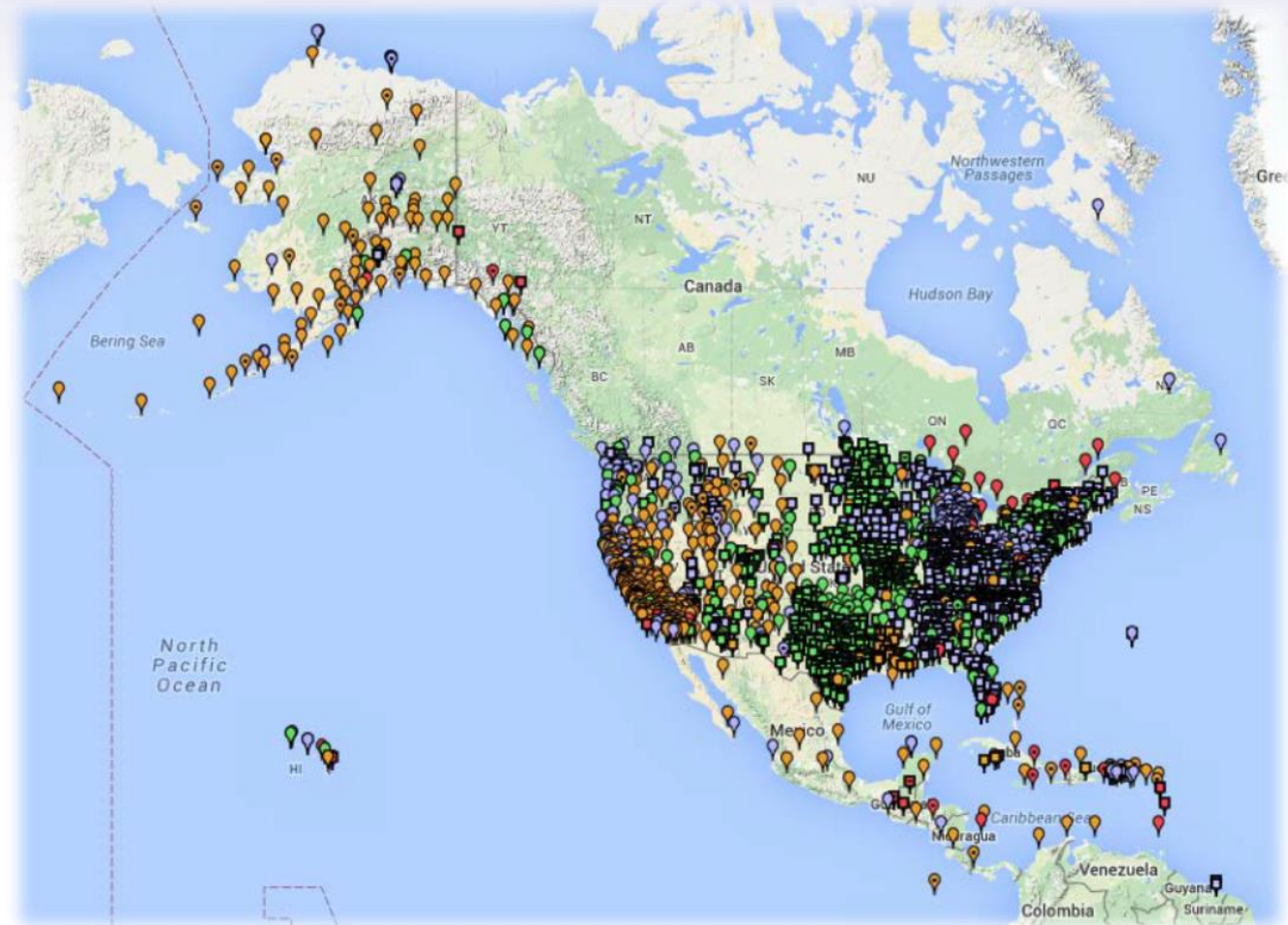
Francine Coloma, NOAA/NGS

Multi-Year CORS Solution 2 (MYCS2) Released

New Coordinates: ITRF2014 epoch 2010.00 and NAD83(2011,MA11,PA11) epoch 2010.00

Foundation CORS progress

Plans for a set of federally-operated, high quality, highly reliable stations with the longevity to guarantee citizens' access to official NSRS positions and to support international positioning consistency efforts.



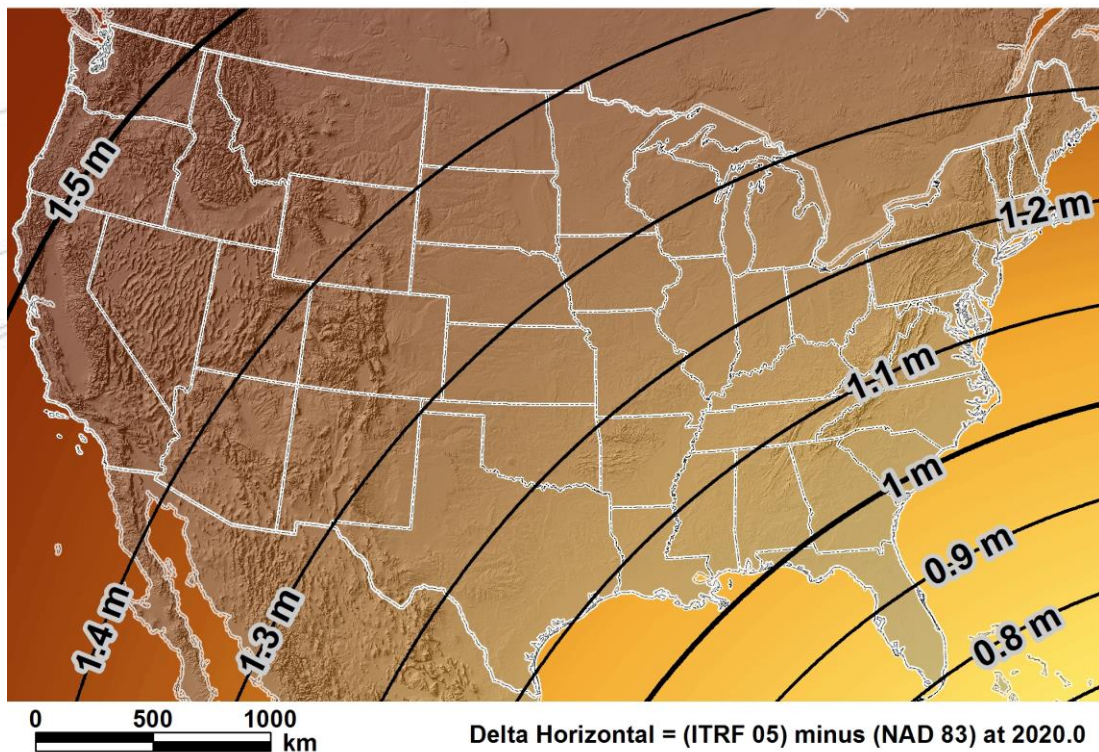
Determining Positions After 2022



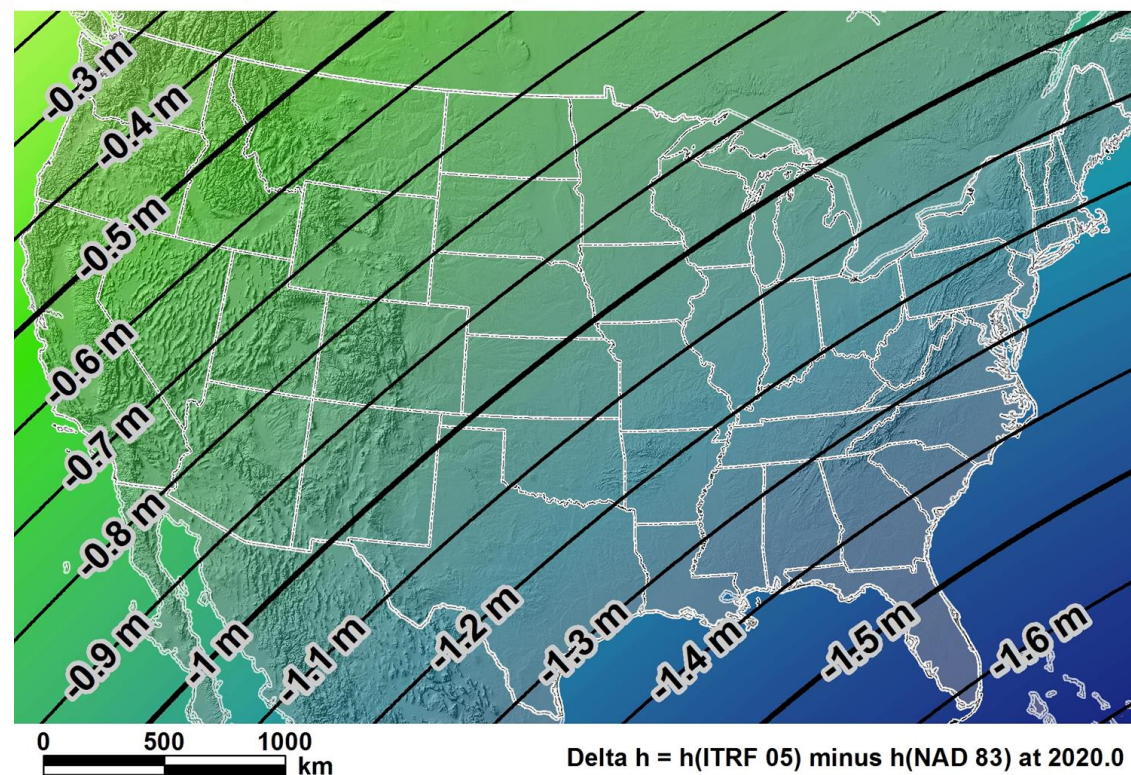
Denis Riordan, PSM
NOAA, National Geodetic Survey
denis.riordan@noaa.gov

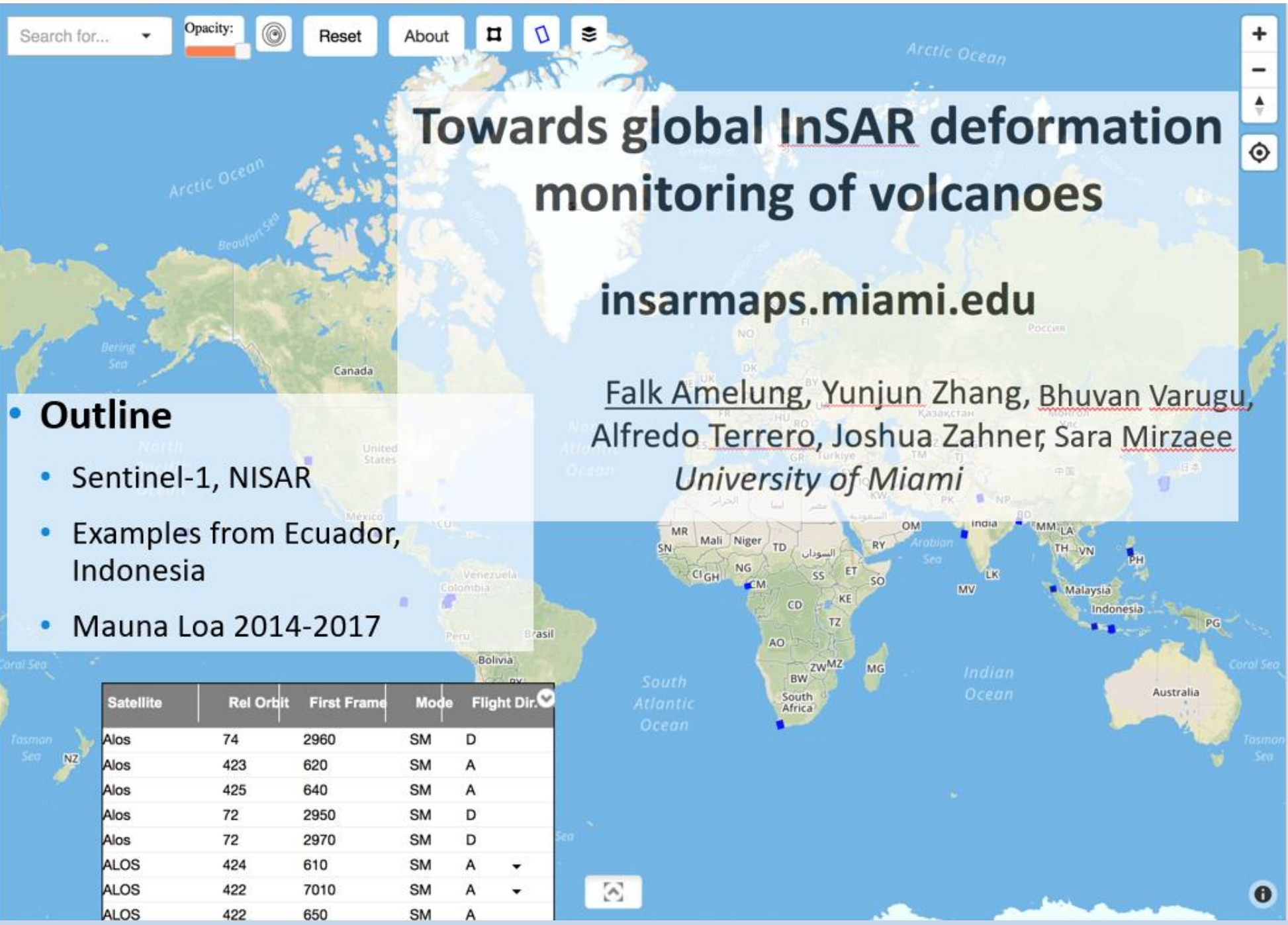


Estimated horizontal change from NAD 83 to new geometric datum



Estimated ellipsoid height change from NAD 83 to NATRF2022





• Outline

- Sentinel-1, NISAR
- Examples from Ecuador, Indonesia
- Mauna Loa 2014-2017

Expressed interest in installing transponders for InSAR at GNSS stations



Maintaining Spatial Data Accuracy in an Increasingly Space-based National Park Service

Neil Winn
GIS Specialist
National Park Service
Assateague Island National Seashore/
Resource Information Services Division



The Status of Geologic and Geomorphic Mapping in Florida

Guy "Harley" Means
P.G. Administrator
Assistant State Geologist

GPS and InSAR monitoring of coastal subsidence in Florida: Implications to coastal flooding hazard assessments

Shimon Wdowinski

Florida International University





Ionospheric Product Developments at the Space Weather Prediction Center

ION-GNSS+ 2019 Miami

Rob Steenburgh
Space Weather Prediction Center
Boulder, CO
robert.steenburgh@noaa.gov