

Design, Construction and Implementation of a Statewide Real Time Kinematic GPS Network

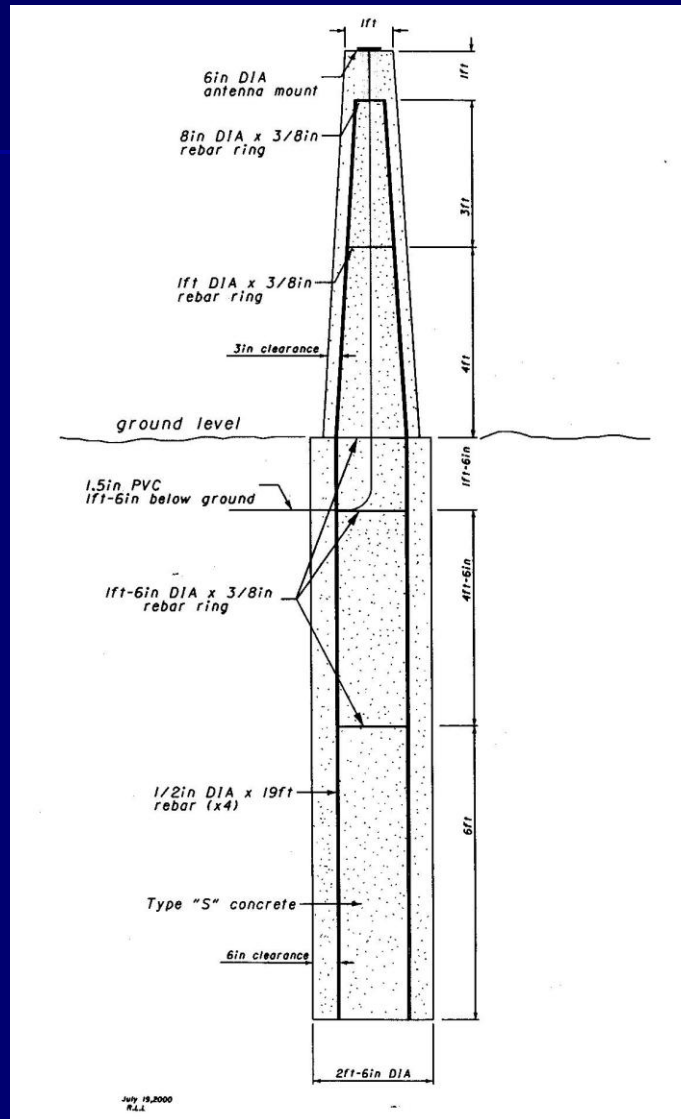
**John A. Ray
Administrator
Office of Aerial Engineering
Ohio Department of Transportation**

September 21, 2004

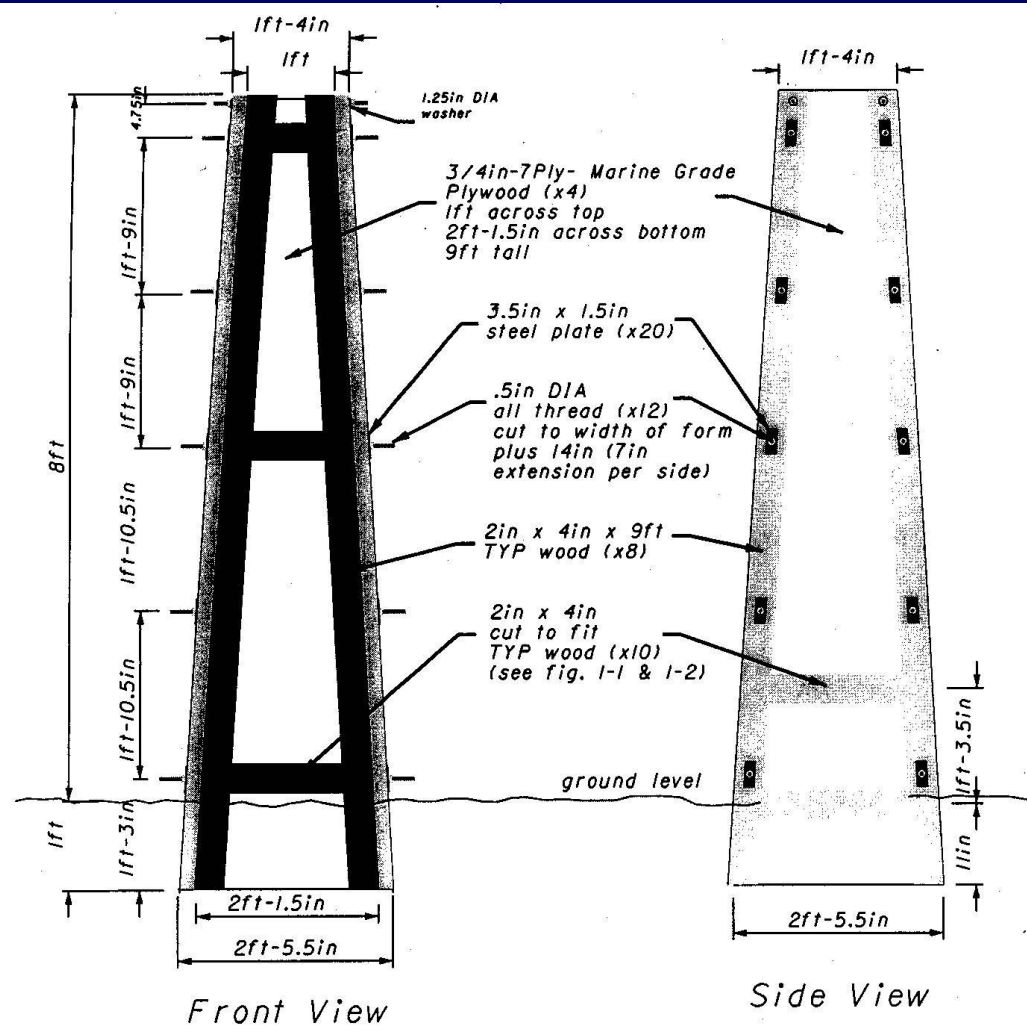
Design Considerations

- Monument Stability
- Signal Quality
- Continuous Power
- Lightning Protection
- Vandal Resistant
- Station Locations
- Network Connections
- Single Point Control
- Uniformity
- Connectivity
- Environmental Factors
- Maintenance

Monument Design

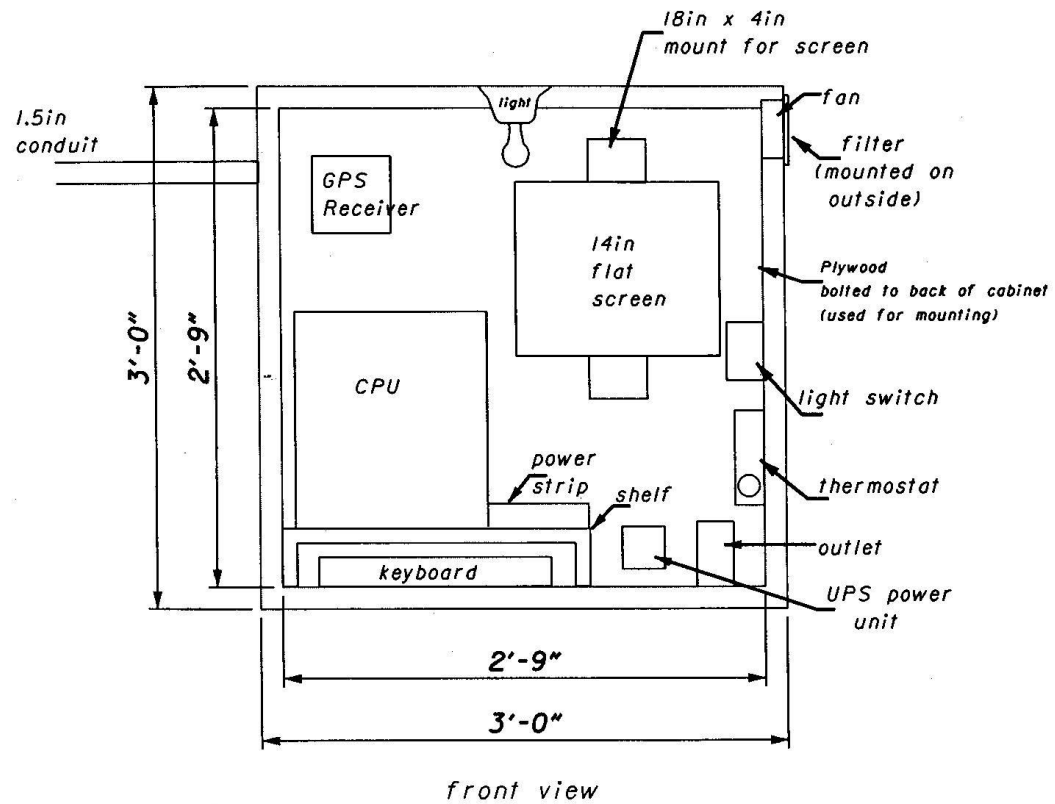


Form Design

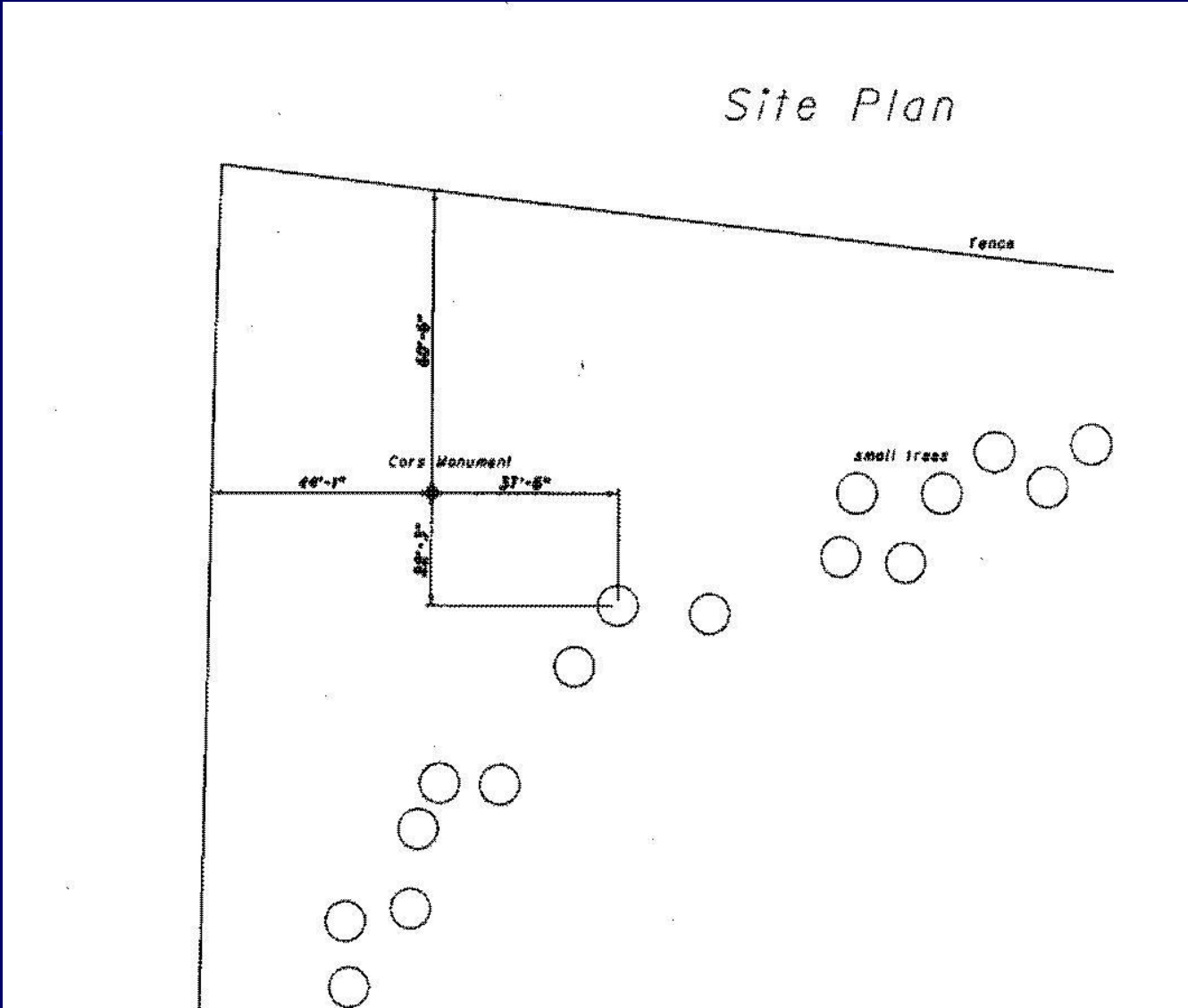


Cabinet Design

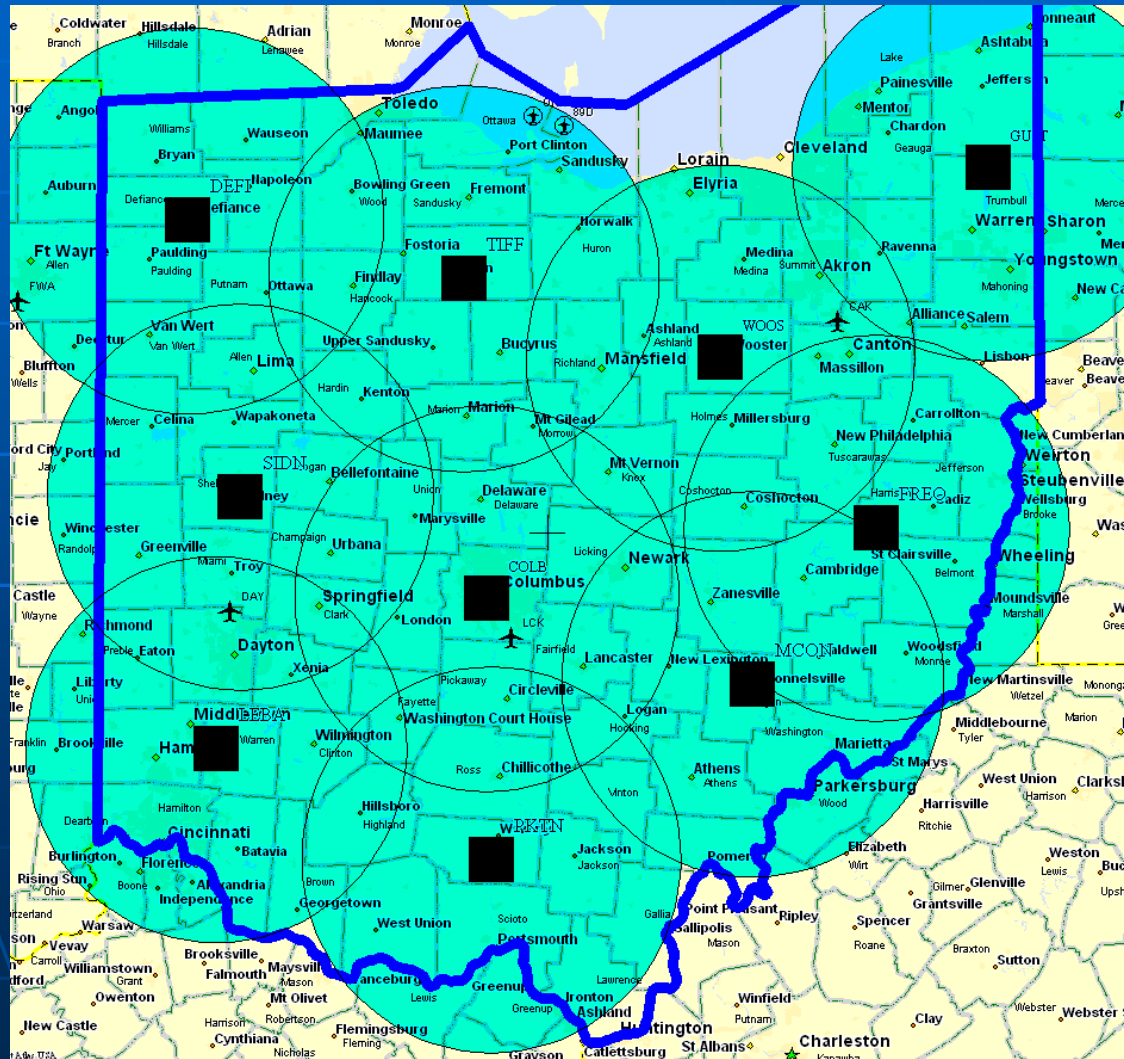
CT Cabinet



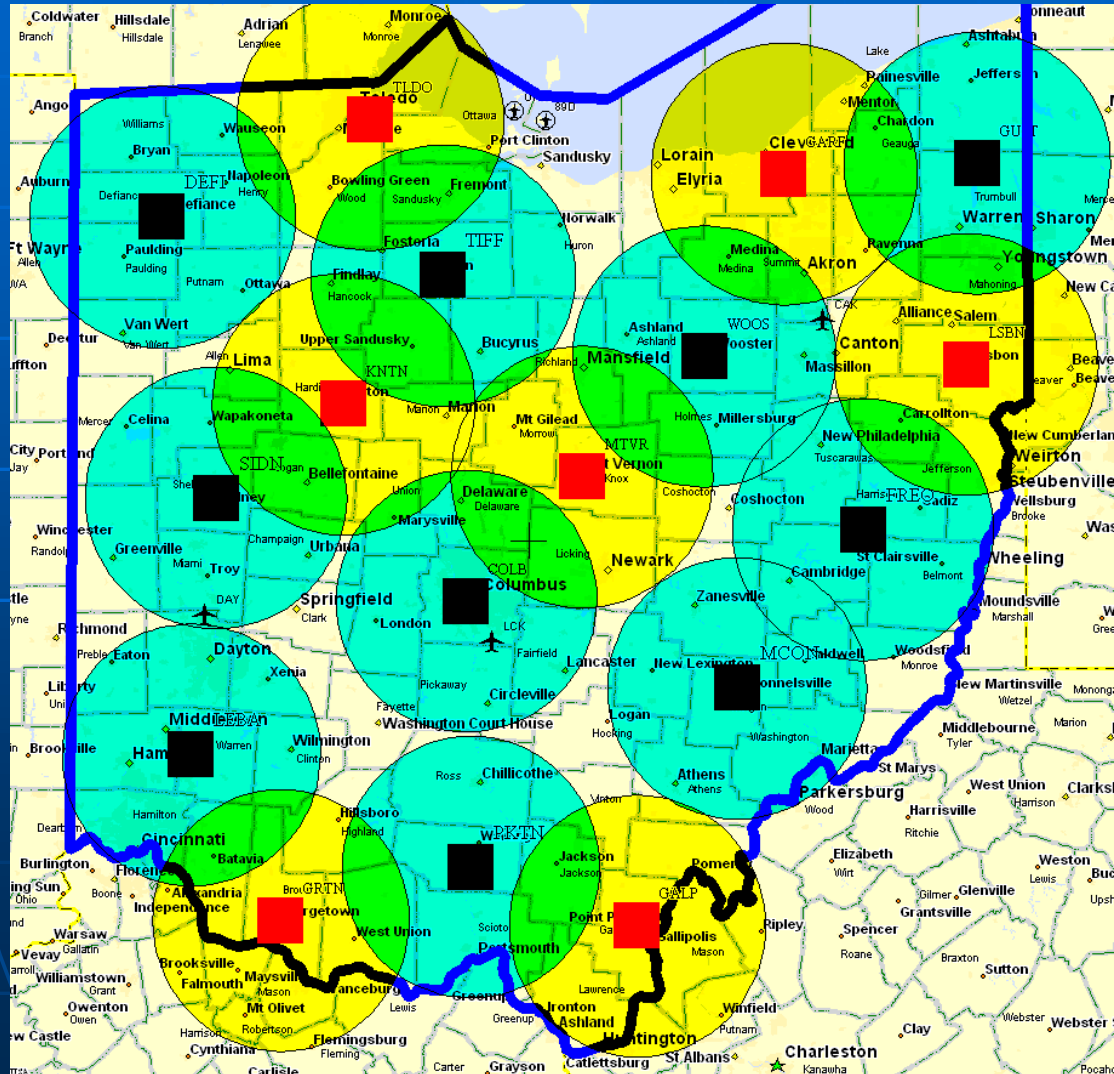
Site Plan



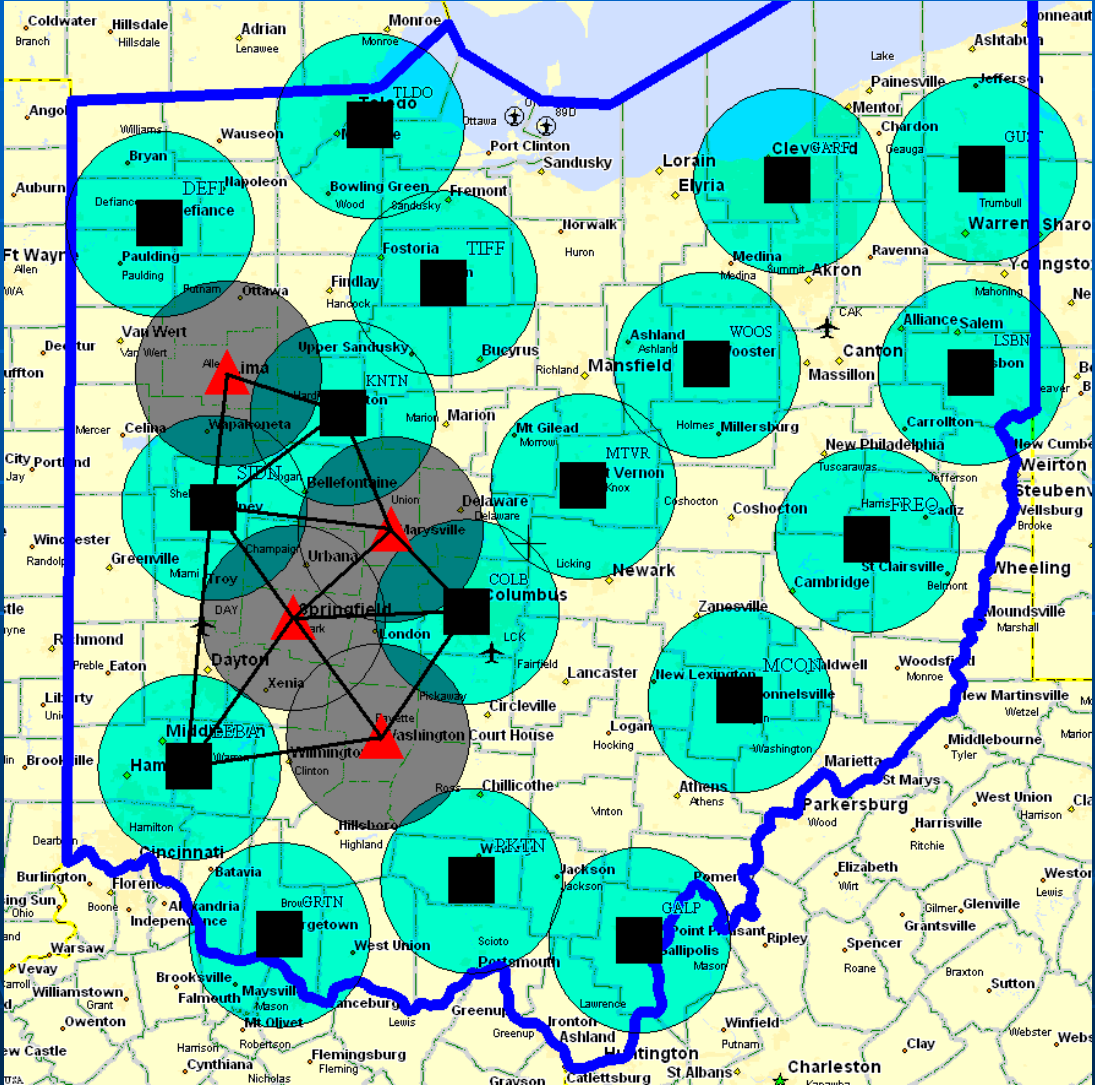
Location Design (Phase 1)



Location Design (Phase 2)



Location Design (Phase 3)



Location Design (Phase 4)



Construction

We elected to construct the entire system ourselves to ensure quality control, modify the design as needed and have a complete understanding of the system for maintenance activities.

CORS Crew



L to R: Dave Beiter, Tim Burkholder, John Ray, Dave Albrecht, Rick Hentz, Jim Stafa & Greg Gerst

Construction Testing Location for Data Quality



Construction Test Hole



Construction Drilling Hole



Construction Set Reinforcing Steel



Construction Ditch



Construction Electrical Box



Construction Set Forms



Construction Pouring Concrete



Construction Antenna Mount



Construction Placing Antenna Mount



Construction Completed Monument (Classic)



Construction Completed Cabinet (Classic)



Construction CORS Lite Mount



Construction CORS Lite Cabinet



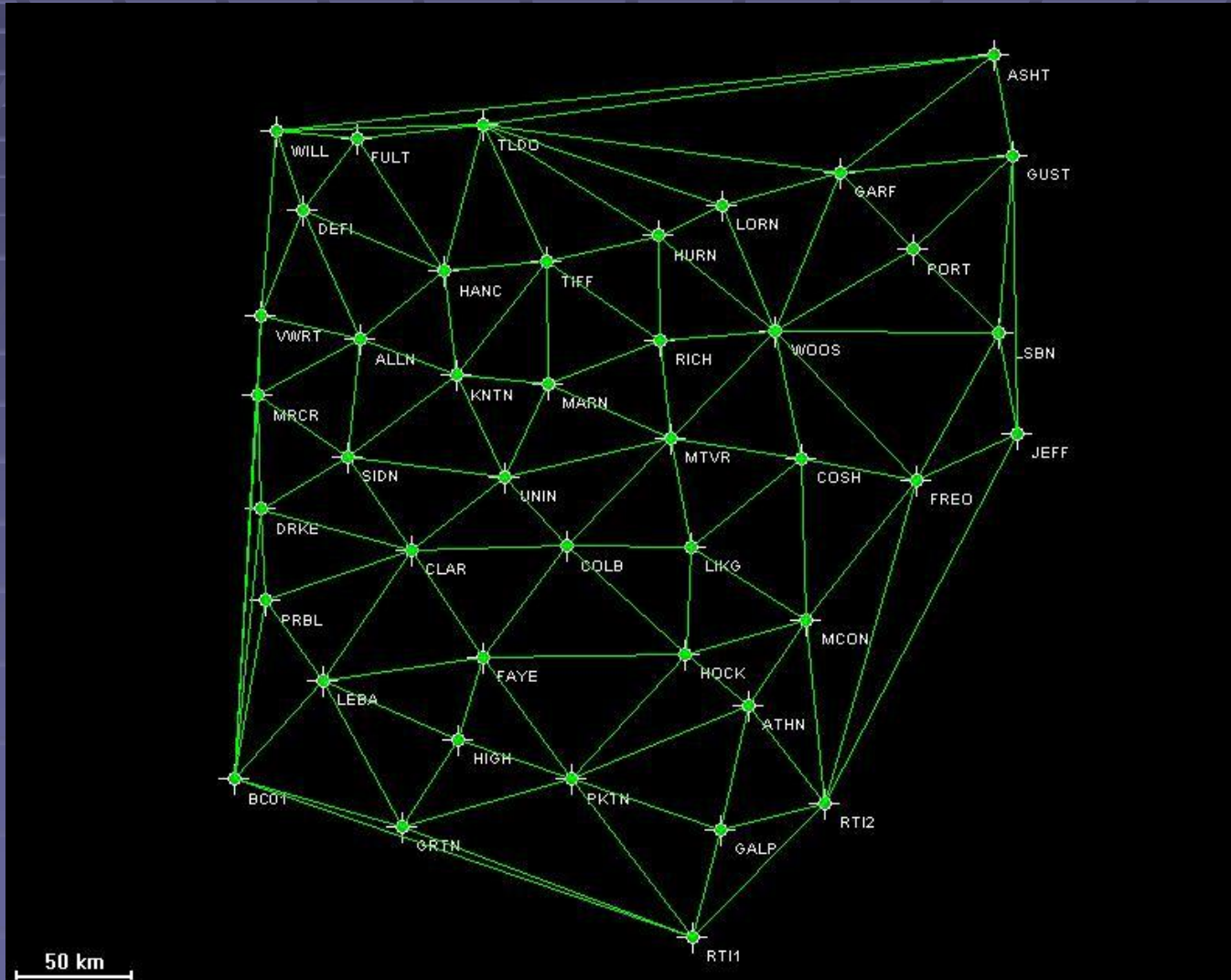
Implementation Rover Equipment



Implementation Telecommunications Solution



Implementation Network Adjustment



Implementation

- User Agreements Pending!

Implementation User Access

Each user will be assigned an “IP” address with a unique user log-on and password for authentication.

Implementation Training / Public Awareness

Numerous training sessions and public presentations are planned to make potential users aware of what is available.

Implementation System Management

- Daily monitoring
- Website updates
- NGS coordination
- Software Upgrades
- Hardware Upgrades
- Future planning
- Etc.

Implementation

Cooperation with other entities

- University
- City
- Private Company
- County
- County (outside Ohio)

Implementation Maintenance

Preventative maintenance as well as emergency repairs will be performed to ensure maximum availability.